

Read enclosed leaflet before use. **उपयोग से पहले संलग्न लीफलेट पढ़ें।** ఉపయోగించుటకు ముందు జతపరచిన కరవ్రమును చదవండి. బళకీగే వోదలు సుత్తువరద కరవ్రవన్ను ఓది. ఒబయోగీకీక్రగ్రున్, ఇణణణకకబుడుగ్లన్గ శీగ్రేదైడై తుబుగ్లెక్రబుక్ర బుకకలవం.

**PYCLO - Pyraclostrobin 20% WG (Fungicide)**

**Chemical Composition :** Pyraclostrobin: active ingredients...20.00% w/w, Precipitated silicic acid...20.60% w/w, Ammonium sulfate ...20.00% w/w, Sodium Ligno sulfonate....18.00% w/w, Sodium salt of condensation product of Naphtalene sulfonic acid with formaldehyde....11.00% w/w, Mixture of sodium alkyl carboxylate and sodium alkyl naphthalene sulfonate...02.00% w/w, Sodium salt : tallow fatty acid....00.50% w/w, Aluminium silicate : Kaolin...Q.S. % w/w, Total... 100.00% w/w. **Direction of Use :** Please see the enclosed leaflet before use. **Precautions :** 1) Avoid inhalation and skin contact while diluting because of spillage or splashes. do not mix with bare hands. 2) The user should use full protective clothing, which includes rubber gloves, boots, face shield and overall or rubber apron or hat. **Antidote :** There is no specific antidote. Treat the patient symptomatically. **First Aid :** In case of skin contact remove contaminated clothes immediately. Wash the contaminated skin thoroughly with soap and water. if inhale, keep patient calm, remove to fresh air in case of eye contact wash affected eyes for at least 15 minutes under running water with eyelids held open. in case of ingestion, rinse mouth immediately and then drink plenty of water. Seek medical attention. **Symptoms :** The early symptoms maybe any combination of nausea vomiting. Eye and skin irritation may occur. **Recommendations :** Pyraclostrobin 20% WG is a very effective fungicide used to control early blight disease in Tomato; tikka disease in Groundnut; Sigatoka leaf spot in Banana; Frog eye leaf spot (Cercospora) & Alternaria leaf spot on soyabean; Alternaria leaf blight on Cotton; Turcicum leaf blight on corn; Anthracnose on Chilli crop. **Caution: Not to be used on crops other than specified on this lable/leaflet.**

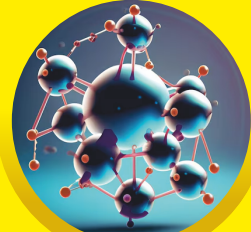
Keep in cool, dry place away from heat and open flame. ఠడి, శుక్ర జగఢు మే రక్రే. గమీ ఠుర లు సే దూ రక్రే.

**EMPTY PACKAGES/CONTAINERS SHOULD BE DESTROYED AFTER USE**



**PYCLO**  
**Pyraclostrobin 20% WG**

Fungicide



Manufactured & Marketed by:  
**AMISH CROP SCIENCES PVT. LTD.**

Net Weight:  
**500 g**

Manufactured & Marketed by:  
**AMISH CROP SCIENCES PVT. LTD.,**  
Survey No.: 172, Udumulapadu (Vill),  
Dhone (Mandal), Nandyal (Dist.) - 518 222,  
Andhra Pradesh, INDIA.

उत्पादक और विपणनकर्ता :  
**अमिश क्राप साइंसेस प्राइवेट लिमिटेड,**  
सर्वे नंबर : १७२, उदुमुलापाडु (ग्राम), खोन (मंडल),  
नंद्याल (जिल्ला) - ५१८ २२२, आन्ध्रप्रदेश, भारत



KEEP OUT OF THE REACH OF CHILDREN.  
పిల్లలకు దూరముగా ఉంచండి  
बच्चों की पहुँच से दूर रखें  
మಕ್ಕళ కీగే సిగదంతే భద్రవಾಗಿ ఇదిరి

**For Agricultural Use Only**



In Case of any Consumer Complaints Contact :  
"Manager-Customer Care" Cell No.: +91 70750 68855,  
Email: [customercare@amishcropsciences.com](mailto:customercare@amishcropsciences.com) Office : Agrisol House,  
8-518/21, Allwyn Cross Roads, Miyapur, Hyderabad-500 049, Telangana.  
उपयोक्ता शिकायती-फ्रीडबैक के लिए: कस्टमर केयर मैनैजर उपरोक्त पते या कॉल पर उपलब्ध है।  
+९१ ७०७५० ६८८५५, ई-मैडल: [customercare@amishcropsciences.com](mailto:customercare@amishcropsciences.com)

Regn.No./रि.नं.डो.: CIR-283105/2023-Pyraclostrobin (WG) (445)-168  
Mfg.Lic.No/उत्प.लिसि.नं.: KNL/49/COMM/PM/2018/5281  
Net Weight कुल भार/कुल वजन : **500 g**  
Batch No. बैच नं./बैच नं.  
Mfg.Date उत्पादन तिथि/उत्पादन तिथि  
Exp.Date शेल्फ लाइफ/शेल्फ लाइफ  
Max. Retail Price ₹ (Inclusive of all taxes) अधिकतम विक्रय मूल्य ₹ (सबसे करों सहित) **₹ १००.००**  
Unit Sale Price ₹ :